

Product datasheet for **AM20914PU-N**

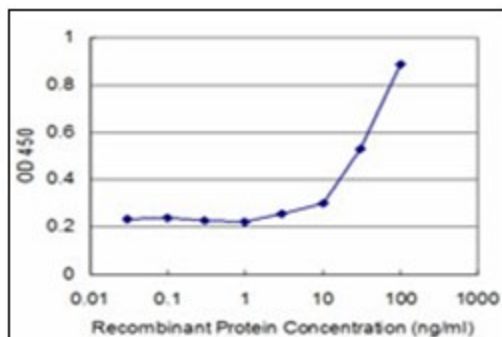
SMAD6 Mouse Monoclonal Antibody [Clone ID: 1G2]

Product data:

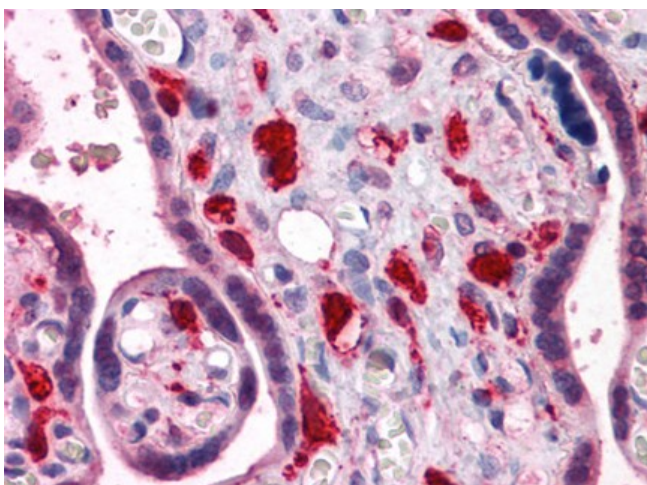
| | |
|-----------------------|---|
| Product Type: | Primary Antibodies |
| Clone Name: | 1G2 |
| Applications: | ELISA, IHC, WB |
| Recommended Dilution: | ELISA. Immunohistochemistry on Paraffin Sections: 5 µg/ml. Western Blot. |
| Reactivity: | Human |
| Host: | Mouse |
| Isotype: | IgG2a |
| Clonality: | Monoclonal |
| Immunogen: | Recombinant protein, SMAD6 (NP_005576, 285 a.a. ~ 385 a.a) partial recombinant protein with GST tag. MW of the GST tag alone is 26 KDa. |
| Specificity: | This antibody reacts to SMAD, Mothers Against DPP Homolog 6 (SMAD6). |
| Formulation: | PBS, pH 7.2 State: Liquid purified Ig fraction |
| Concentration: | lot specific |
| Purification: | Protein A Chromatography |
| Conjugation: | Unconjugated |
| Storage: | Store the antibody at -20°C. Avoid repeated freezing and thawing. |
| Stability: | Shelf life: one year from despatch. |
| Gene Name: | SMAD family member 6 |
| Database Link: | Entrez Gene 4091 Human O43541 |
| Synonyms: | SMAD family member 6, SMAD 6, SMAD-6, MADH6, MAD homolog 6 |
| Protein Families: | Cancer stem cells, Druggable Genome, ES Cell Differentiation/IPS, Transcription Factors |
| Protein Pathways: | TGF-beta signaling pathway |



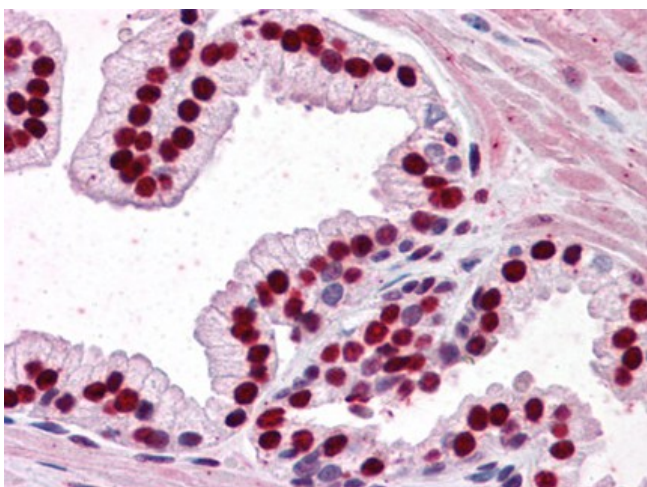
[View online »](#)

Product images:

Detection limit for recombinant GST tagged SMAD6 is approximately 3 ng/ml as a capture antibody.



Human Placenta: Formalin-Fixed, Paraffin-Embedded (FFPE)



Human Prostate: Formalin-Fixed, Paraffin-Embedded (FFPE)