

Product datasheet for **AM20902PU-N**

IDH2 Mouse Monoclonal Antibody [Clone ID: 5F11]

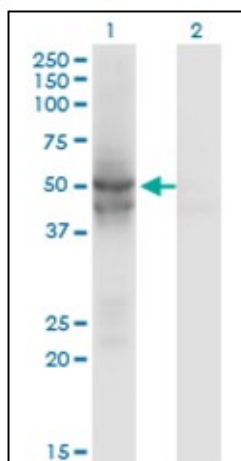
Product data:

Product Type:	Primary Antibodies
Clone Name:	5F11
Applications:	ELISA, IHC, WB
Recommended Dilution:	ELISA. Immunohistochemistry on Paraffin Sections: 5 µg/ml. Western Blot.
Reactivity:	Human
Host:	Mouse
Isotype:	IgG1
Clonality:	Monoclonal
Immunogen:	Recombinant protein, IDH2 (NP_002159, 354 a.a. ~ 452 a.a) partial recombinant protein with GST tag. MW of the GST tag alone is 26 KDa.
Specificity:	This antibody reacts to Isocitrate Dehydrogenase (IDH2).
Formulation:	PBS, pH 7.2 State: Liquid purified Ig fraction
Concentration:	lot specific
Purification:	Protein A Chromatography
Conjugation:	Unconjugated
Storage:	Store the antibody at -20°C. Avoid repeated freezing and thawing.
Stability:	Shelf life: one year from despatch.
Gene Name:	isocitrate dehydrogenase (NADP(+)) 2, mitochondrial
Database Link:	Entrez Gene 3418 Human P48735
Synonyms:	mitochondrial Oxalosuccinate decarboxylase, ICDH, IDP, ICD-M
Protein Pathways:	Citrate cycle (TCA cycle), Glutathione metabolism, Metabolic pathways

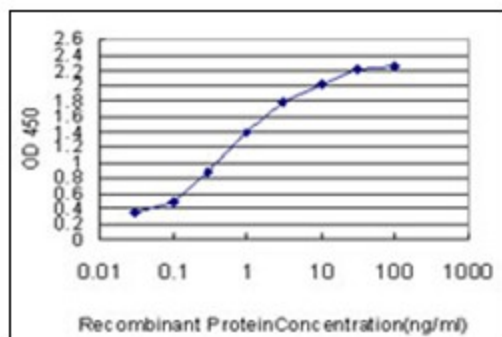


[View online »](#)

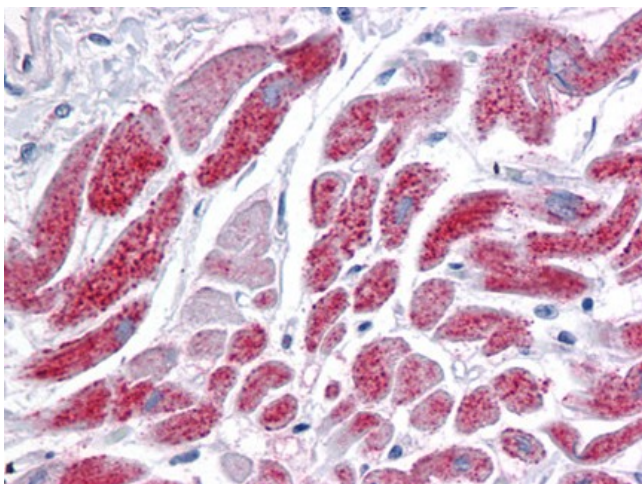
Product images:



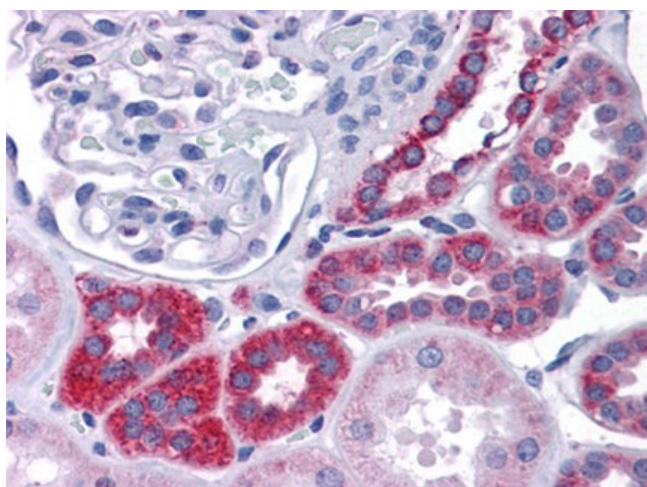
Western Blot analysis of IDH2 expression in transfected 293T cell line by IDH2 monoclonal antibody clone 5F11.



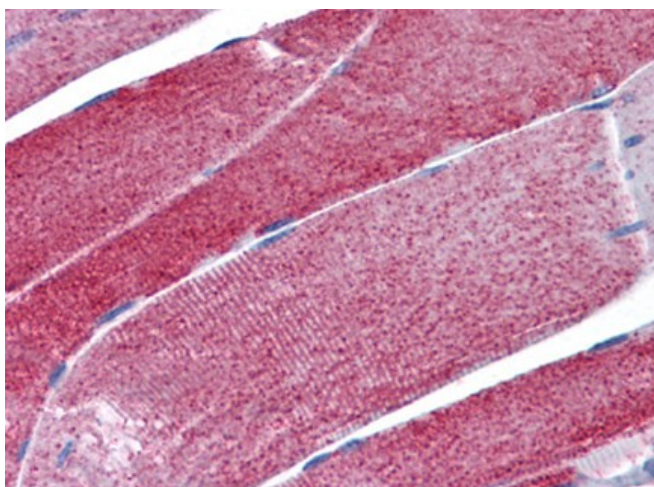
Detection limit for recombinant GST tagged IDH2 is approximately 0.03 ng/ml as a capture antibody.



Human Heart: Formalin-Fixed, Paraffin-Embedded (FFPE)



Human Kidney: Formalin-Fixed, Paraffin-Embedded (FFPE)



Human Skeletal muscle: Formalin-Fixed, Paraffin-Embedded (FFPE)