

Product datasheet for **AM20469SU-N**

Cytokeratin 7 (KRT7) Mouse Monoclonal Antibody [Clone ID: 5D12]

Product data:

Product Type:	Primary Antibodies
Clone Name:	5D12
Applications:	ELISA, FC, IHC, WB
Recommended Dilution:	ELISA: 1/10000. Flow Cytometry: 1/200 - 1/400. Immunohistochemistry on Paraffin Sections: 1/200 - 1/400. Western Blot: 1/500 - 1/2000.
Reactivity:	Human
Host:	Mouse
Isotype:	IgG1
Clonality:	Monoclonal
Immunogen:	Purified recombinant fragment of human CK7 expressed in E. Coli.
Specificity:	Recognizes Cytokeratin 7 (KRT7).
Formulation:	State: Ascites State: Ascites fluid containing 0.03% Sodium Azide as preservative
Conjugation:	Unconjugated
Storage:	Store the antibody undiluted at 2-8°C for one month or (in aliquots) at -20°C for longer. Avoid repeated freezing and thawing.
Stability:	Shelf life: one year from despatch.
Gene Name:	keratin 7
Database Link:	Entrez Gene 3855 Human P08729



[View online »](#)

Background:

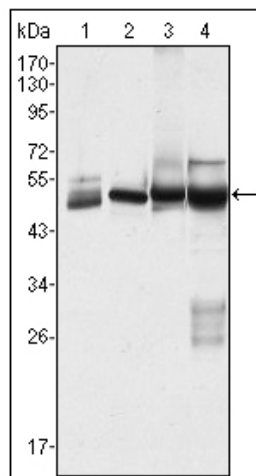
CK7 (Keratin, type II cytoskeletal 7) is a protein that in humans is encoded by the KRT7 gene. CK7 is a member of the keratin family. It is specifically expressed in the simple epithelia lining the cavities of the internal organs and in the gland ducts and blood vessels. The protein encoded by this gene is a member of the keratin gene family. The type II cytokeratins consist of basic or neutral proteins which are arranged in pairs of heterotypic keratin chains coexpressed during differentiation of simple and stratified epithelial tissues. This type II cytokeratin is specifically expressed in the simple epithelia lining the cavities of the internal organs and in the gland ducts and blood vessels. The genes encoding the type II cytokeratins are clustered in a region of chromosome 12q12-q13. Alternative splicing may result in several transcript variants; however, not all variants have been fully described.

Synonyms:

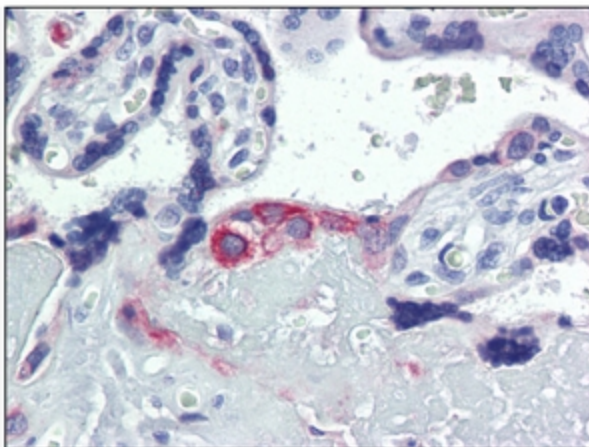
KRT7, KRT-7, SCL, CK-7, CK7, Keratin-7, K7, K-7, Sarcolectin

Protein Families:

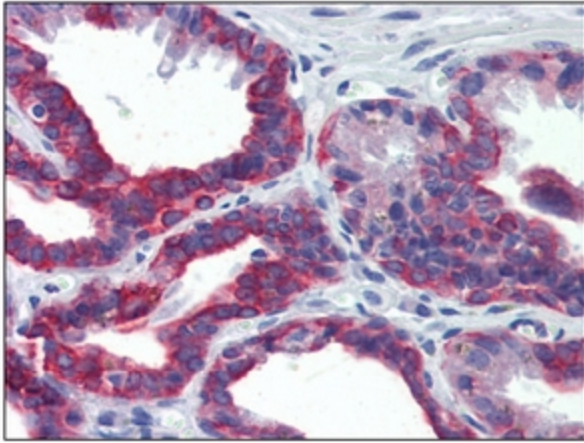
ES Cell Differentiation/IPS

Product images:


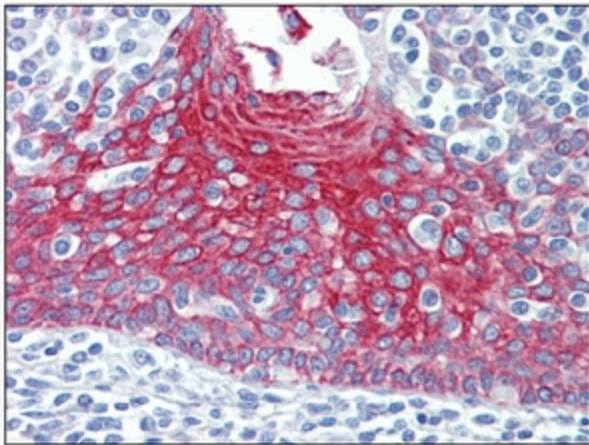
Western blot analysis using Cytokeratin-7 antibody against Hela (Lane 1), MCF-7 (Lane 2), A431 (Lane 3) and A549 (Lane 4) cell lysate.



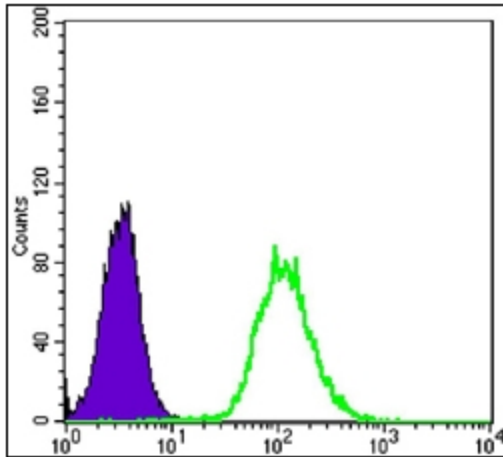
Placenta, Human: Formalin-Fixed, Paraffin-Embedded (FFPE)



Seminal vesicle, Human: Formalin-Fixed, Paraffin-Embedded (FFPE)



Tonsil, Human: Formalin-Fixed, Paraffin-Embedded (FFPE)



Flow cytometric analysis of HeLa cells using Monoclonal anti-Cytokeratin-7 antibody (green) and negative control (purple).