

## Product datasheet for **AM12003PE-N**

### ENPP3 Mouse Monoclonal Antibody [Clone ID: NP4D6]

#### Product data:

Product Type:	Primary Antibodies
Clone Name:	NP4D6
Applications:	FC, IF
Recommended Dilution:	<b>Flow Cytometry</b> analysis of Human blood cells using 20 µl reagent/100 ml of whole blood or 10e6 cells in a suspension. The content of a vial (2 ml) is sufficient for 100 tests. <b>Immunofluorescence.</b>
Reactivity:	Human
Host:	Mouse
Isotype:	IgG1
Clonality:	Monoclonal
Immunogen:	HEK-293 cells transfected with Human CD203c
Specificity:	The antibody NP4D6 reacts with CD203c, a transmembrane ectoenzyme expressed on basophils and mast cells, and overexpressed upon their activation.
Formulation:	PBS Label: PE State: Liquid purified Ig fraction Stabilizer: 0.2% high-grade protease free BSA as a stabilizing agent Preservative: 15 mM Sodium Azide Label: Conjugated with R-Phycoerythrin under optimum conditions
Purification:	Size-Exclusion Chromatography
Conjugation:	PE
Storage:	Store the antibody undiluted at 2-8°C. <b>DO NOT FREEZE!</b> This antibody is photosensitive and should be protected from light.
Stability:	Shelf life: One year from despatch.
Gene Name:	ectonucleotide pyrophosphatase/phosphodiesterase 3



[View online »](#)

**Database Link:** [Entrez Gene 5169 Human O14638](#)

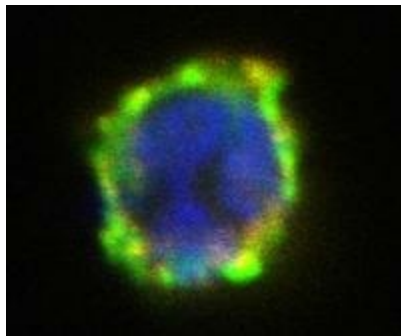
**Background:** CD203c, also known as ENPP-3, is integral membrane ectoenzyme (ectonucleotide pyrophosphatase/phosphodiesterase 3), that hydrolyses nucleotide triphosphates and thus modulates purinergic signaling. CD203c is expressed mainly on activated basophils and mast cells. CD203c is upregulated in response to IgE-receptor cross-linking and is overexpressed on neoplastic mast cells in patients with systemic mastocytosis. Measurement of its induced enhancement on the plasma membrane is useful for diagnostics of allergies.

**Synonyms:** E-NPP 3, PDNP3, Phosphodiesterase I beta, PD-I beta

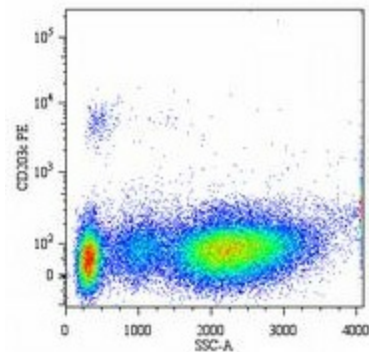
**Protein Families:** Druggable Genome, Transmembrane

**Protein Pathways:** Metabolic pathways, Nicotinate and nicotinamide metabolism, Pantothenate and CoA biosynthesis, Purine metabolism, Riboflavin metabolism, Starch and sucrose metabolism

### Product images:



Surface staining of activated human basophil by FITC-conjugated anti-CD63 (clone MEM-259, green) and PE-conjugated anti-CD203c (clone NP4D6, red); merged signal yellow. DNA visualized by DAPI (blue).



Surface staining of human basophils in allergen-stimulated whole blood (CD203cpos/ SSClow) by anti-CD203c antibody (NP4D6).