

## Product datasheet for **AM09037PU-N**

### GRP94 (HSP90B1) (676-803) Mouse Monoclonal Antibody [Clone ID: 2H3]

#### Product data:

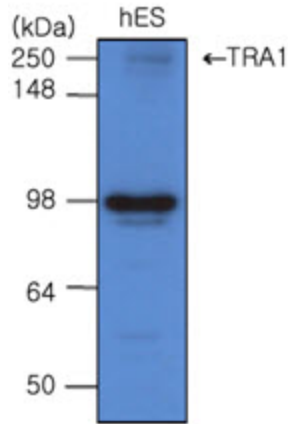
Product Type:	Primary Antibodies
Clone Name:	2H3
Applications:	ELISA, IF, IHC, WB
Recommended Dilution:	<b>ELISA.</b> <b>Western blot.</b> <b>Immunofluorescence</b> (1/100-1/200). <b>Immunohistochemistry on Paraffin Sections</b> (5 µg/ml).
Reactivity:	Human
Host:	Mouse
Isotype:	IgG2a
Clonality:	Monoclonal
Immunogen:	Recombinant Human TRA1 (676-803 aa) purified from <i>E. coli</i>
Specificity:	The antibody recognizes Human TRA1. Other species not tested.
Formulation:	PBS, pH 7.4 containing 0.02% Sodium Azide and 10% Glycerol State: Purified State: Liquid purified Ig fraction
Concentration:	lot specific
Purification:	Affinity Chromatography on Protein G
Conjugation:	Unconjugated
Storage:	Store undiluted at 2-8°C for up to two weeks or (in aliquots) at -20°C for longer. Avoid repeated freezing and thawing.
Stability:	Shelf life: one year from despatch.
Gene Name:	heat shock protein 90kDa beta family member 1
Database Link:	<a href="#">Entrez Gene 7184 Human P14625</a>
Background:	Tumor rejection antigen 1 (TRA1) is expressed on the surface of human teratocarcinoma stem cells (EC), human embryonic germ cells (EG) and human embryonic stem cells (ES). TRA1 is a marker protein of these stem cells.



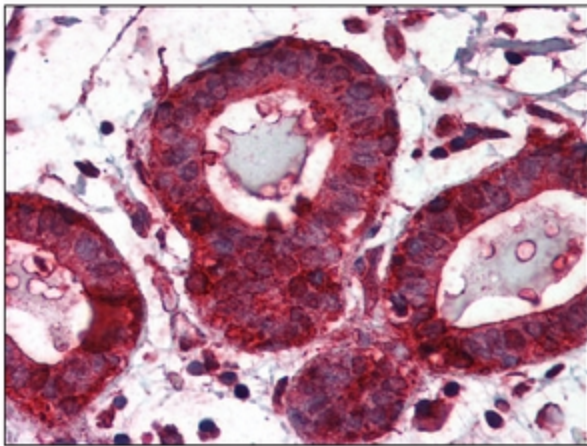
[View online »](#)

Synonyms: Tumor rejection antigen 1, GRP94

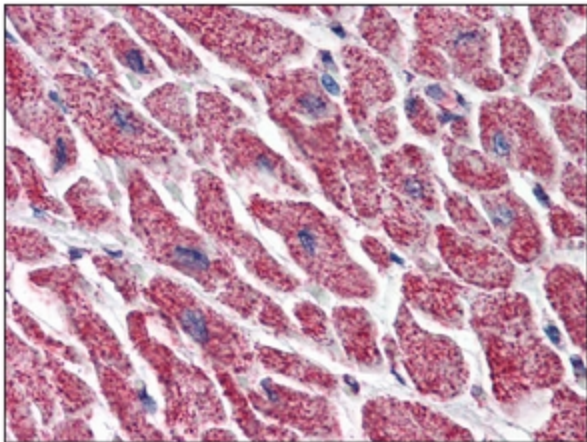
**Product images:**



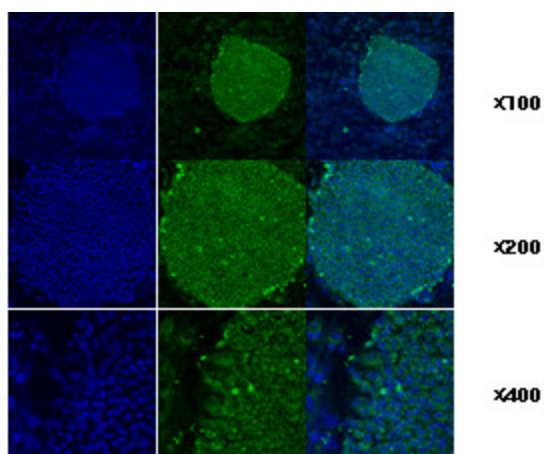
Western blot analysis: The cell lysates of hES (20 ug) were resolved by SDS-PAGE, transferred to PVDF membrane and probed with HSP90B1 antibody (1/500). Proteins were visualized using a goat anti-mouse secondary antibody conjugated to HRP and an ECL detection system.



Immunohistochemistry: HSP90B1 antibody staining of Formalin-Fixed, Paraffin-Embedded Human Breast at 5 ug/ml followed by biotinylated anti-Mouse IgG secondary antibody, Alkaline Phosphatase-Streptavidin and chromogen.



Immunohistochemistry: HSP90B1 antibody staining of Formalin-Fixed, Paraffin-Embedded Human Heart at 5 ug/ml followed by biotinylated anti-Mouse IgG secondary antibody, Alkaline Phosphatase-Streptavidin and chromogen.



Immunofluorescence staining of human ES cell colony with monoclonal anti-human TRA1 antibody (2H3).