

## Product datasheet for **AM09008PU-S**

### Eph receptor A2 (EPHA2) Mouse Monoclonal Antibody [Clone ID: 3D7]

#### Product data:

Product Type:	Primary Antibodies
Clone Name:	3D7
Applications:	ELISA, IHC, WB
Recommended Dilution:	<b>ELISA.</b> <b>Western blot</b> (1/500-1/2,000). <b>Immunohistochemistry</b> (1/100-1/200).
Reactivity:	Human, Mouse
Host:	Mouse
Isotype:	IgG2b
Clonality:	Monoclonal
Immunogen:	Recombinant human EphA2 (559-976 aa) purified from E. coli
Specificity:	The antibody recognizes Human and Mouse EPHA2. Other species not tested.
Formulation:	PBS, pH 7.4 containing 0.02% Sodium Azide and 10% Glycerol State: Purified State: Liquid purified Ig fraction
Concentration:	lot specific
Purification:	Affinity Chromatography on Protein G
Conjugation:	Unconjugated
Storage:	Store undiluted at 2-8°C for up to two weeks or (in aliquots) at -20°C for longer. Avoid repeated freezing and thawing.
Stability:	Shelf life: one year from despatch.
Gene Name:	EPH receptor A2
Database Link:	<a href="#">Entrez Gene 13836 Mouse</a> <a href="#">Entrez Gene 1969 Human</a> <a href="#">P29317</a>



[View online »](#)

**Background:**

The Eph family of receptors is the largest known subfamily of receptor tyrosine kinases (RTK). Eph RTKs and their ligands, the ephrins, are frequently overexpressed in a variety of cancers and tumor cell lines. One Eph family member, EphA2, is also overexpressed in a wide variety of cancers, including breast, small-cell lung and gastrointestinal cancers, melanomas, and neuroblastomas. The ephrin-Eph interactions are important in development, especially in cell-cell interactions involved in nervous system patterning and possibly in cancer.

**Synonyms:**

Ephrin type-A receptor 2, Epithelial cell kinase, Eph receptor A2

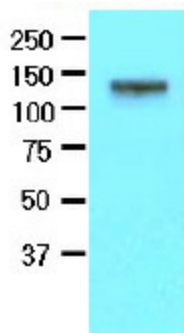
**Protein Families:**

Druggable Genome, Protein Kinase, Transmembrane

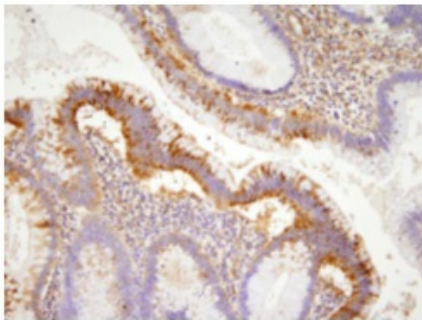
**Protein Pathways:**

Axon guidance

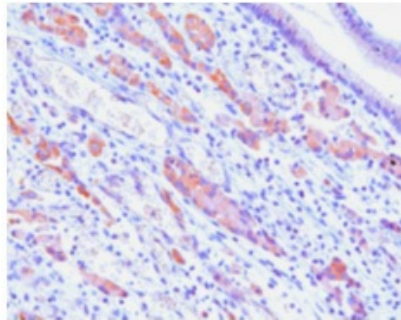
**Product images:**



Western blot analysis on mouse brain: The extracts of mouse brain (50 ug) were resolved by SDS-PAGE, transferred to NC membrane and probed with anti-human EphA2 antibody (1/500). Proteins were visualized using a goat anti-mouse secondary antibody conjugated to HRP and an ECL detection system.

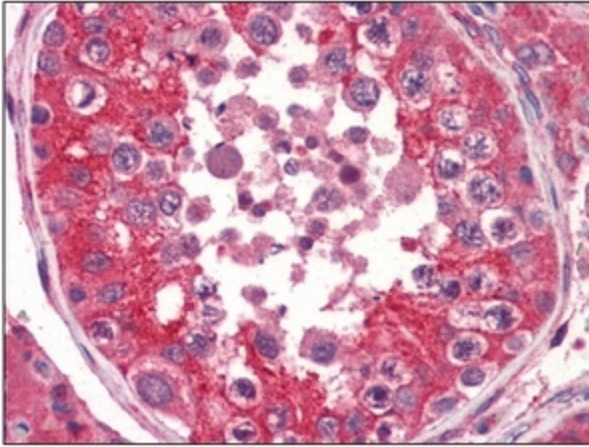


**Human colon cancer**

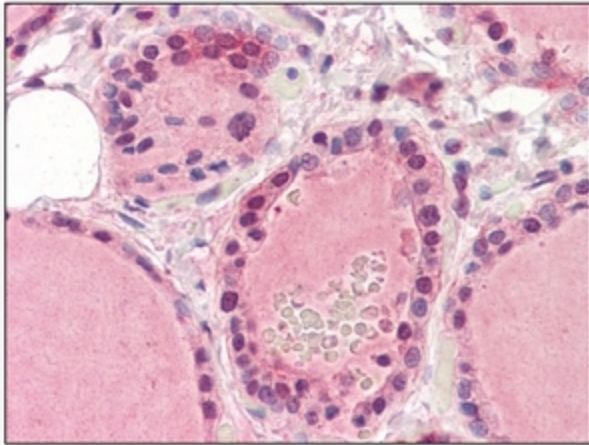


**Human gastric cancer**

Immunohistochemistry: Formalin-Fixed, Paraffin-Embedded Human Testis stained with EPHA2 antibody at 5 ug/ml followed by biotinylated anti-mouse IgG secondary antibody alkaline phosphatase-streptavidin and chromogen.



Immunohistochemistry: Formalin-Fixed, Paraffin-Embedded Human Thyroid stained with EPHA2 antibody at 5 ug/ml followed by biotinylated anti-mouse IgG secondary antibody alkaline phosphatase-streptavidin and chromogen.



Immunohistochemistry: Paraffin embedded sections of human colon and gastric cancer tissue were incubated with anti-human EphA2 antibody (1/100) for 2 hours at room temperature. Antigen retrieval was performed in 0.1 M sodium citrate buffer and detected using Diaminobenzidine (DAB).