

Product datasheet for **AM08409PU-N**

CDK2 Mouse Monoclonal Antibody [Clone ID: 4i33]

Product data:

Product Type:	Primary Antibodies
Clone Name:	4i33
Applications:	ELISA, IHC, IP, WB
Recommended Dilution:	ELISA. Immunohistochemistry on Paraffin Sections: 5 µg/ml. Immunoprecipitation. Western Blot.
Reactivity:	Human, Mouse, Xenopus
Host:	Mouse
Isotype:	IgG
Clonality:	Monoclonal
Immunogen:	Recombinant Human CDK2
Specificity:	Recognizes Human CDK2 (MW 33kD). Does not cross-react with other CDKs.
Formulation:	0.1M Tris-glycine, pH 7.4, 150mM Sodium Chloride State: Purified State: Liquid purified Ig fraction Preservative: 0.05% Sodium Azide
Concentration:	lot specific
Purification:	Protein G Chromatography
Conjugation:	Unconjugated
Storage:	Store undiluted at 2-8°C for one month or (in aliquots) at -20°C for longer. Avoid repeated freezing and thawing.
Stability:	Shelf life: one year from despatch.
Gene Name:	cyclin-dependent kinase 2
Database Link:	Entrez Gene 1017 Human P24941



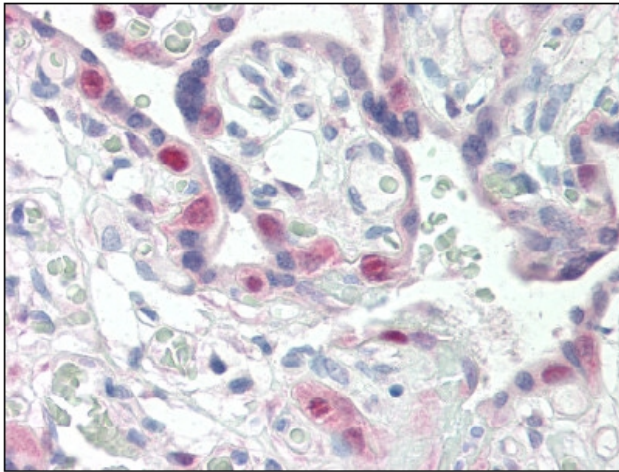
[View online »](#)

Background:

Cdk2 is a member of the Ser/Thr protein kinase family. It is highly similar to the gene products of *S. cerevisiae* *cdc28*, and *S. pombe* *cdc2*. It is a catalytic subunit of the cyclin-dependent protein kinase complex, whose activity is restricted to the G1-S phase, and is essential for cell cycle G1/S phase transition. This protein associates with and is regulated by the regulatory subunits of the complex including cyclin A or E, CDK inhibitor p21Cip1 (CDKN1A) and p27Kip1 (CDKN1B). Its activity is also regulated by protein phosphorylation. Two alternatively spliced variants and multiple transcription initiation sites of this gene have been reported.

Synonyms:

p33 protein kinase

Product images:

Placenta: Formalin-Fixed Paraffin-Embedded (FFPE)