

## Product datasheet for **AM08397HR-N**

### Insulin (INS) Mouse Monoclonal Antibody [Clone ID: 8E2]

#### Product data:

|                       |   |
|-----------------------|---|
| Product Type:         | Primary Antibodies  |
| Clone Name:           | 8E2   |
| Applications:         | ELISA, IHC  |
| Recommended Dilution: | <b>ELISA.</b><br><b>Immunohistochemistry on Paraffin Sections:</b> 10 µg/ml.  |
| Reactivity:           | Human   |
| Host:                 | Mouse   |
| Isotype:              | IgG1  |
| Clonality:            | Monoclonal  |
| Immunogen:            | Purified Human Insulin  |
| Specificity:          | Recognizes human Insulin. Species cross-reactivity: human proinsulin, bovine insulin (30%) and porcine insulin. Does not cross-react with free C-peptide. |
| Formulation:          | PBS, pH 7.4 containing 0.05% Proclin300<br>Label: HRP<br>State: Liquid purified Ig fraction<br>Label: Horseradish Peroxidase                              |
| Concentration:        | lot specific  |
| Purification:         | Affinity Chromatography on Protein A  |
| Conjugation:          | HRP   |
| Storage:              | Store the antibody undiluted at 2-8°C for one month or (in aliquots) at -20°C for longer.<br>Avoid repeated freezing and thawing.                         |
| Stability:            | Shelf life: one year from despatch.   |
| Gene Name:            | insulin   |
| Database Link:        | <a href="#">Entrez Gene 3630 Human P01308</a>   |



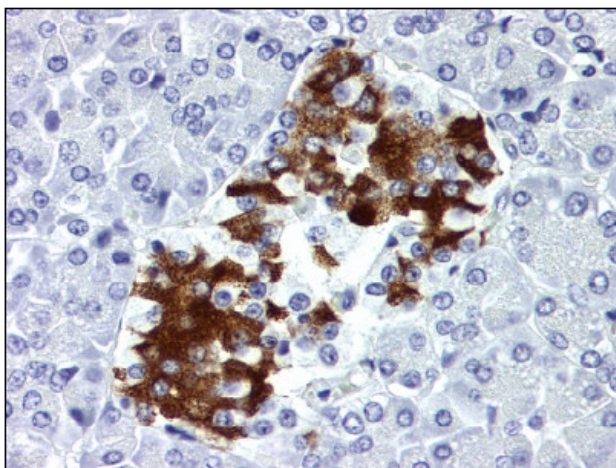
[View online »](#)

**Background:**

Insulin is one of the major regulatory hormones of intermediate metabolism throughout the body. The biological actions of this hormone involve integration of carbohydrate, protein, and lipid metabolism. Insulin enhances membrane transport of glucose, amino acids, and certain ions. It also promotes glycogen storage, formation of triglycerides and synthesis of proteins and nucleic acids. Immunocytochemical investigations have localized insulin in the B cells of pancreatic islets of Langerhans. Deficiency of insulin results in diabetes mellitus, one of the leading causes of morbidity and mortality in the general population. Insulin is also present in tumors of B cell origin such as insulinoma.

**Synonyms:**

INS

**Product images:**

AM08397HR-N Insulin Antibody staining of Formalin-Fixed, Paraffin-Embedded Human Pancreas at 10 ug/ml followed by biotinylated anti-mouse IgG secondary antibody, alkaline phosphatase-streptavidin and chromogen.