

## Product datasheet for **AM08284PU-N**

### EMA (MUC1) (C-term) Rabbit Monoclonal Antibody [Clone ID: G22-L]

#### Product data:

Product Type:	Primary Antibodies
Clone Name:	G22-L
Applications:	IHC
Recommended Dilution:	<b>Immunohistochemistry on Frozen Sections:</b> 1/400 - 1/600. <b>Immunohistochemistry on Paraffin Sections:</b> 10 µg/ml.
Reactivity:	Human
Host:	Rabbit
Isotype:	Ig
Clonality:	Monoclonal
Immunogen:	Synthetic Peptide derived from C-terminal sequence of Human CD227/Mucin-1.
Specificity:	This antibody recognizes Mucin 1 (MUC1/CA15-3/CA27-29).
Formulation:	20 mM Tris-HCl, pH 8.0 containing 20 mg/ml BSA as stabilizer and 0.05% Sodium Azide as preservative State: Purified State: Liquid purified Ig fraction.
Concentration:	lot specific
Conjugation:	Unconjugated
Storage:	Store undiluted at 2-8°C. <b>DO NOT FREEZE!</b>
Stability:	Shelf life: one year from despatch.
Gene Name:	mucin 1, cell surface associated
Database Link:	<a href="#">Entrez Gene 4582 Human P15941</a>



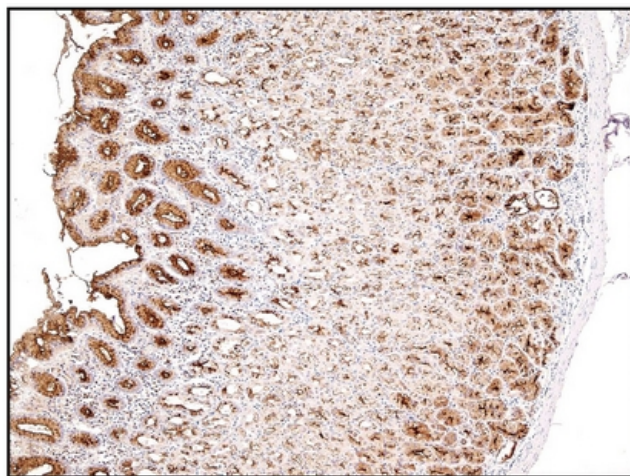
[View online »](#)

**Background:**

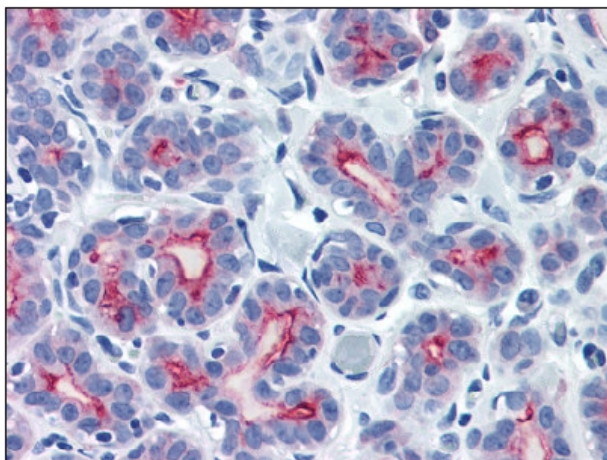
MUC1 is a large cell surface mucin glycoprotein expressed by most glandular and ductal epithelial cells and some hematopoietic cell lineages. It is expressed on most secretory epithelium, including mammary gland and some hematopoietic cells. It is expressed abundantly in lactating mammary glands and overexpressed abundantly in >90% breast carcinomas and metastases. Transgenic MUC1 has been shown to associate with all four cebB receptors and localize with erbB1 (EGFR) in lactating glands. The MUC1 gene contains seven exons and produces several different alternatively spliced variants. The major expressed form of MUC1 uses all seven exons and is a type 1 transmembrane protein with a large extracellular tandem repeat domain. The tandem repeat domain is highly O glycosylated and alterations in glycosylation have been shown in epithelial cancer cells. Isoform 7 of MUC1 behaves as a receptor and binds the secreted isoform 5. The binding induces the phosphorylation of the isoform 7, alters cellular morphology and initiates cell signaling.

**Synonyms:**

MUC-1, PEMT, Episialin, EMA, H23AG, PUM, DF3, CA 15-3

**Product images:**

Formalin-fixed and paraffin-embedded human stomach tissue (4 microns) stained with anti-epithelial membrane antigen antibody shows strong positive immunostaining of epithelial cells.



Breast: Formalin-Fixed, Paraffin-Embedded (FFPE)