

Product datasheet for **AM06670SU-N**

c Kit (KIT) Mouse Monoclonal Antibody [Clone ID: 1C5]

Product data:

Product Type:	Primary Antibodies
Clone Name:	1C5
Applications:	ELISA, IHC, WB
Recommended Dilution:	Western Blot: 1/500 - 1/2000. Immunohistochemistry on paraffin sections 1/200 - 1/1000. ELISA: 1/10000.
Reactivity:	Human
Host:	Mouse
Isotype:	IgG1
Clonality:	Monoclonal
Immunogen:	Purified recombinant fragment of human KIT expressed in E. Coli.
Specificity:	This antibody reacts to KIT.
Formulation:	State: Ascites State: Ascitic fluid containing 0.03% sodium azide.
Conjugation:	Unconjugated
Storage:	Store the antibody undiluted at 2-8°C for one month or (in aliquots) at -20°C for longer. Avoid repeated freezing and thawing.
Stability:	Shelf life: one year from despatch.
Predicted Protein Size:	145 kDa
Gene Name:	KIT proto-oncogene receptor tyrosine kinase
Database Link:	Entrez Gene 3815 Human P10721



[View online »](#)

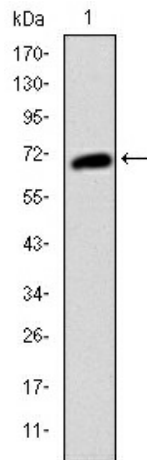
Background:

The c-Kit proto-oncogene is a member of the receptor tyrosine kinase family and, more specifically, is closely related to the platelet derived growth factor receptor (PDGFR). c-Kit, the normal cellular homolog of the HZ4-feline sarcoma virus transforming gene (v-Kit), encodes a transmembrane receptor. c-Kit regulates a variety of biological responses including chemotaxis, cell proliferation, apoptosis and adhesion. c-Kit is also identical with the product of the W locus in mice and, as such, is integral to the development of mast cells and hematopoiesis. The ligand for the c-Kit receptor (KL) has been identified and is encoded at the murine steel (Sl) locus. Kit is the human homolog of the proto-oncogene c-Kit. Mutations in Kit are integral for tumor growth and progression in various cancers.

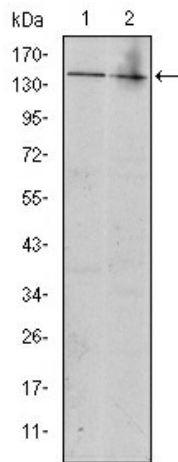
Synonyms:

SCFR, KIT

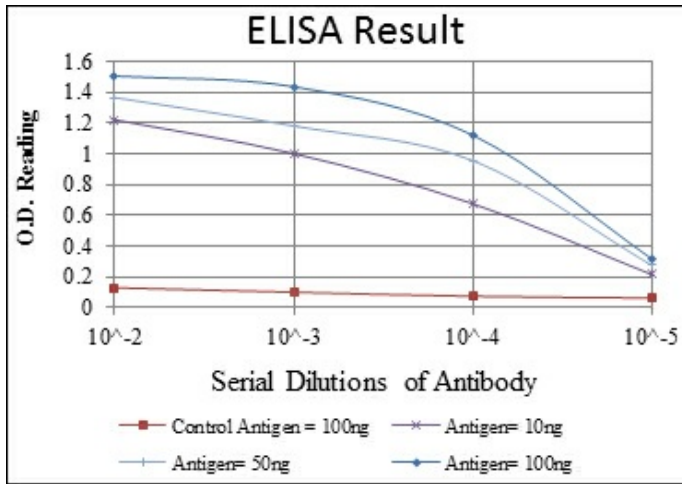
Product images:



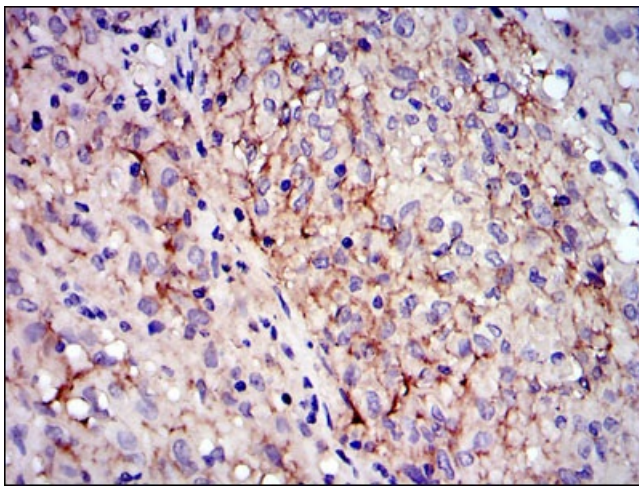
Western blot analysis using KIT mAb against human KIT (AA: 805-976) recombinant protein. (Expected MW is 45 kDa)



Western blot analysis using KIT mouse mAb against Jurkat (1) and Hela (2) cell lysate.



Red: Control Antigen (100ng) Purple: Antigen (10ng) Green: Antigen (50ng) Blue: Antigen (100ng)



Immunohistochemical analysis of paraffin-embedded gastrointestinal stromal tumor using KIT mouse mAb with DAB staining.