

## Product datasheet for **AM06638SU-N**

### Cytokeratin 19 (KRT19) Mouse Monoclonal Antibody [Clone ID: 1H6]

#### Product data:

Product Type:	Primary Antibodies
Clone Name:	1H6
Applications:	ELISA, IHC, WB
Recommended Dilution:	<b>Western Blot:</b> 1/500-1/2000. <b>Immunohistochemistry on Paraffin Sections:</b> 1/200-1/1000. <b>ELISA:</b> 1/10000.
Reactivity:	Human
Host:	Mouse
Isotype:	IgG1
Clonality:	Monoclonal
Immunogen:	Purified recombinant fragment of human KRT19 expressed in E. Coli.
Specificity:	This antibody recognizes KRT19.
Formulation:	State: Ascites State: Ascitic fluid containing 0.03% sodium azide.
Conjugation:	Unconjugated
Storage:	Store undiluted at 2-8°C for one month or (in aliquots) at -20°C for longer. Avoid repeated freezing and thawing.
Stability:	Shelf life: one year from despatch.
Predicted Protein Size:	41 kDa
Gene Name:	keratin 19
Database Link:	<a href="#">Entrez Gene 3880 Human P08727</a>



[View online »](#)

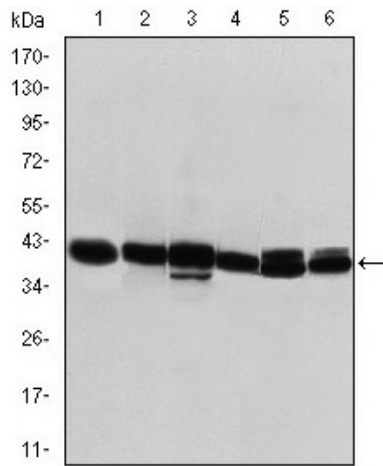
**Background:**

The protein encoded by this gene is a member of the keratin family. The keratins are intermediate filament proteins responsible for the structural integrity of epithelial cells and are subdivided into cytokeratins and hair keratins. The type I cytokeratins consist of acidic proteins which are arranged in pairs of heterotypic keratin chains. Unlike its related family members, this smallest known acidic cytokeratin is not paired with a basic cytokeratin in epithelial cells. It is specifically expressed in the periderm, the transiently superficial layer that envelopes the developing epidermis. The type I cytokeratins are clustered in a region of chromosome 17q12-q21.

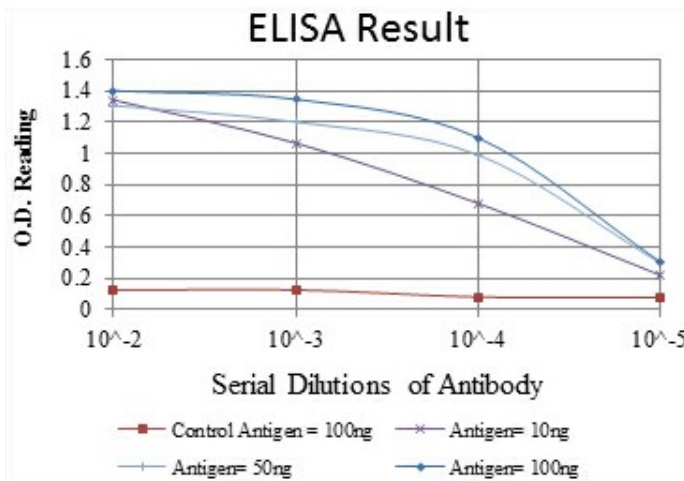
**Synonyms:**

Cytokeratin-19, Keratin-19, KRT19, CK19, K19

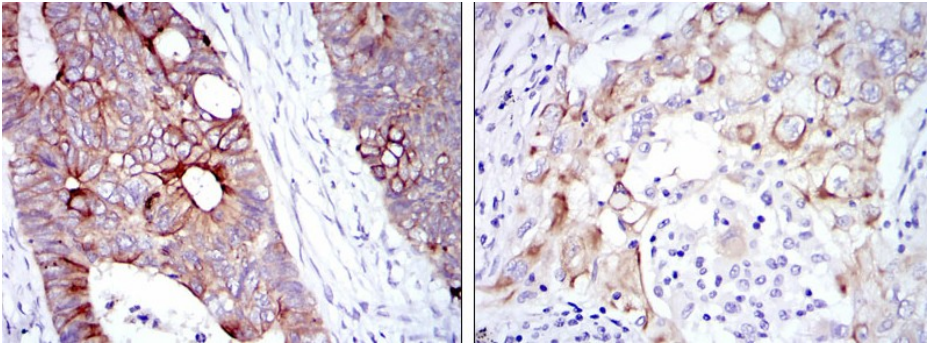
**Product images:**



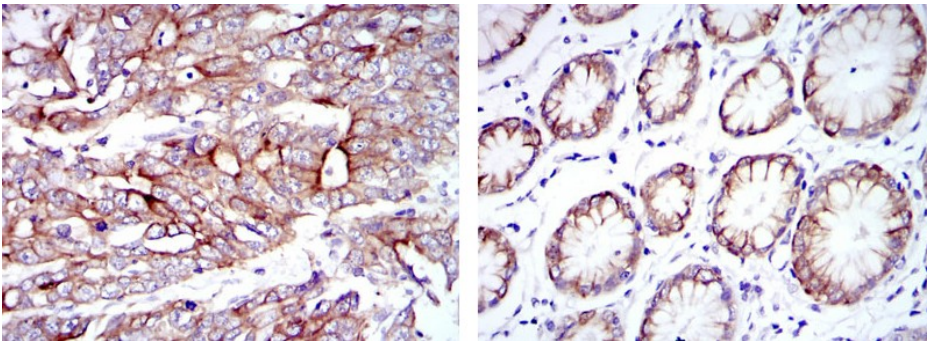
Western blot analysis using KRT19 mouse mAb against T47D (1), MCF-7 (2), SKBR-3 (3), HepG2 (4), Caco-2 (5) and SW620 (6) cell lysate.



Red: Control Antigen (100ng) Purple: Antigen (10ng) Green: Antigen (50ng) Blue: Antigen (100ng)



Immunohistochemical analysis of paraffin-embedded rectum cancer tissues (left) and lung cancer tissues (right) using KRT19 mouse mAb with DAB staining.



Immunohistochemical analysis of paraffin-embedded stomach cancer tissues (left) and stomach tissues (right) using KRT19 mouse mAb with DAB staining.