

## Product datasheet for **AM06574SU-N**

### alpha smooth muscle Actin (ACTA2) Mouse Monoclonal Antibody [Clone ID: 1H8]

#### Product data:

Product Type:	Primary Antibodies
Clone Name:	1H8
Applications:	ELISA, FC, IF, WB
Recommended Dilution:	<b>ELISA:</b> 1/10000. <b>Western Blot:</b> 1/500-1/2000. <b>Flow Cytometry:</b> 1/200-1/400. <b>Immunofluorescence:</b> 1/200-1/1000.
Reactivity:	Human, Monkey, Mouse, Rat
Host:	Mouse
Isotype:	IgG1
Clonality:	Monoclonal
Immunogen:	Purified recombinant fragment of Human ACTA2 expressed in E. Coli.
Specificity:	This antibody recognizes Human, Monkey, Rat, Mouse ACTA2. Other species not tested.
Formulation:	State: Ascites State: Ascitic fluid Preservative: 0.03% Sodium Azide
Conjugation:	Unconjugated
Storage:	Store the antibody undiluted at 2-8°C for one month or (in aliquots) at -20°C for longer. Avoid repeated freezing and thawing.
Stability:	Shelf life: one year from despatch.
Predicted Protein Size:	42 kDa
Gene Name:	actin, alpha 2, smooth muscle, aorta
Database Link:	<a href="#">Entrez Gene 59 Human P62736</a>



[View online »](#)

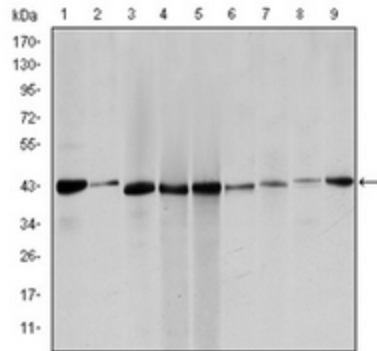
**Background:**

The protein encoded by this gene belongs to the actin family of proteins, which are highly conserved proteins that play a role in cell motility, structure and integrity. Alpha, beta and gamma actin isoforms have been identified, with alpha actins being a major constituent of the contractile apparatus, while beta and gamma actins are involved in the regulation of cell motility. This actin is an alpha actin that is found in skeletal muscle. Defects in this gene cause aortic aneurysm familial thoracic type 6. Multiple alternatively spliced variants, encoding the same protein, have been identified.

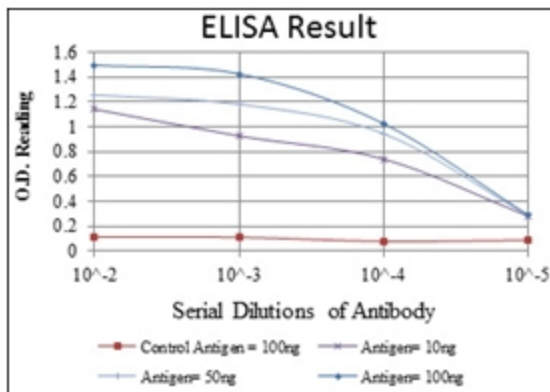
**Synonyms:**

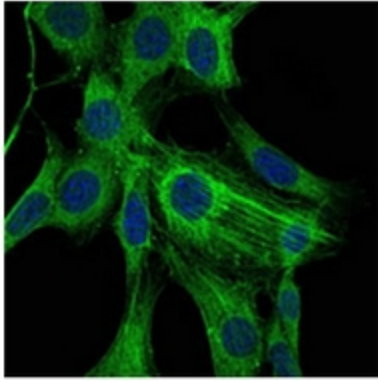
ACTSA, ACTVS, Alpha-actin-2

**Product images:**

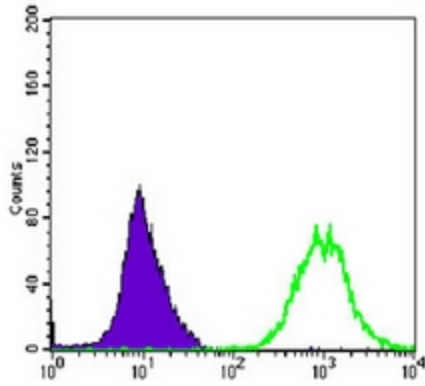


Western blot analysis using ACTA2 antibody Cat.-No AM06574SU-N against HeLa (1), Jurkta (2), HepG2 (3), MCF-7 (4), A431 (5), A549 (6), PC-12 (7), NIH/3T3 (8) and Cos7 (9) cell lysate.





Immunofluorescence analysis of NIH/3T3 cells using ACTA2 antibody Cat.-No AM06574SU-N (green). Blue: DRAQ5 fluorescent DNA dye.



Flow Cytometric analysis of Hela cells using ACTA2 antibody Cat.-No AM06574SU-N (green) and negative control (purple).