

Product datasheet for **AM06276SU-N**

beta Actin (ACTB) Mouse Monoclonal Antibody [Clone ID: 8H10D10]

Product data:

Product Type:	Primary Antibodies
Clone Name:	8H10D10
Applications:	ELISA, FC, IF, WB
Recommended Dilution:	ELISA: 1/10000. Western Blot: 1/500 - 1/2000. Immunofluorescence: 1/200 - 1/1000. Flow Cytometry: 1/200 - 1/400.
Reactivity:	Hamster, Human, Monkey, Mouse, Rat
Host:	Mouse
Isotype:	IgG2b
Clonality:	Monoclonal
Immunogen:	Synthetic peptide corresponding to amino-terminal residues of Human beta-Actin, conjugated to KLH.
Specificity:	Recognizes beta-Actin
Formulation:	State: Ascites State: Ascitic fluid containing 0.03% Sodium Azide.
Conjugation:	Unconjugated
Storage:	Store the antibody undiluted at 2-8°C for one month or (in aliquots) at -20°C for longer. Avoid repeated freezing and thawing.
Stability:	Shelf life: one year from despatch.
Gene Name:	actin, beta
Database Link:	Entrez Gene 60 Human P60709



[View online »](#)

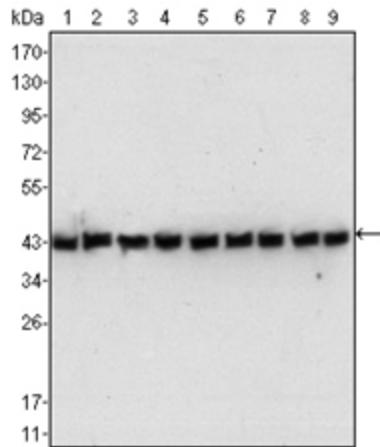
Background:

Beta-actin (PS1TP5-binding protein 1), also known as ACTB, PS1TP5BP1. Entrez Protein NP_001092. It is one of six different actin proteins. Actin, a ubiquitous eukaryotic protein, is the major component of the cytoskeleton. Actins are highly conserved proteins that are involved in various types of cell motility, structure, and integrity. Actin is ubiquitously expressed in all eukaryotic cells. This actin is a major constituent of the contractile apparatus and one of the two nonmuscle cytoskeletal actins.

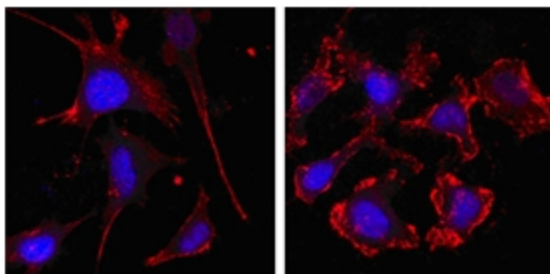
Synonyms:

Actin cytoplasmic 1, Beta-Actin

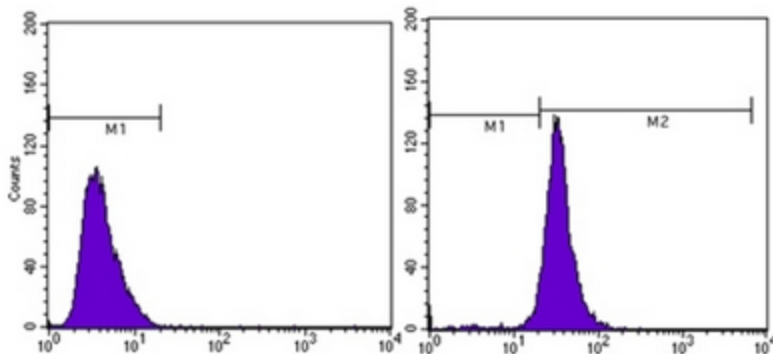
Product images:



Western blot analysis using beta-Actin antibody Cat.-No AM06276SU-N against NIH/3T3 (Lane 1), Jurkat (Lane 2), HeLa (Lane 3), CHO (Lane 4), PC12 (Lane 5), HEK293 (Lane 6), COS (Lane 7), A549 (Lane 8) and MCF-7 (Lane 9) cell lysate.



Confocal Immunofluorescence analysis of SKBR-3 (left) and A549 (right) cells using beta Actin antibody Cat.-No AM06276SU-N (red, the secondary Ab is Cy3-Goat anti Mouse IgG). Blue: DRAQ5 fluorescent DNA dye.



Flow Cytometric analysis of MCF-7 cells using beta Actin antibody Cat.-No AM06276SU-N (right) and Negative Control (left).