

Product datasheet for **AM06152SU-N**

B Raf (BRAF) Mouse Monoclonal Antibody [Clone ID: 1H12F1]

Product data:

Product Type:	Primary Antibodies
Clone Name:	1H12F1
Applications:	ELISA, IHC, WB
Recommended Dilution:	ELISA: 1/10000 Western Blot: 1/500 - 1/2000. Immunohistochemistry on Paraffin Sections: 1/200 - 1/1000.
Reactivity:	Human
Host:	Mouse
Isotype:	IgG1
Clonality:	Monoclonal
Immunogen:	Purified recombinant fragment of BRAF expressed in E. Coli.
Specificity:	Recognizes BRAF (V-raf murine sarcoma viral oncogene homolog B1).
Formulation:	State: Ascites State: Ascitic fluid Preservative: 0.03% Sodium Azide
Conjugation:	Unconjugated
Storage:	Store the antibody undiluted at 2-8°C for one month or (in aliquots) at -20°C for longer. Avoid repeated freezing and thawing.
Stability:	Shelf life: one year from despatch.
Gene Name:	B-Raf proto-oncogene, serine/threonine kinase
Database Link:	Entrez Gene 673 Human P15056



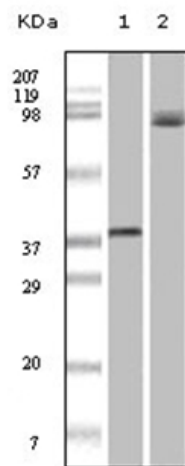
[View online »](#)

Background:

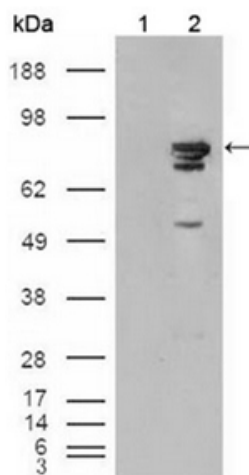
BRAF (V-raf murine sarcoma viral oncogene homolog B1) is the main effectors recruited by GTP-bound Ras to activate the MEK-MAP kinase pathway. B-Raf contains three consensus Akt phosphorylation sites (Ser364, Ser428, and Thr439). B-Raf is a key regulatory molecule of the mitogen-activated protein kinase kinase (MEK), it has a long amino-terminal region, the region is essential for homo-dimerization of B-Raf and hetero-dimerization of B-Raf and c-Raf at the plasma membrane, followed by phosphorylation of Thr118 in the amino-terminal B-Raf-specific region. Notably, in calcium ionophore-stimulated HeLa cells, B-Raf could propagate signals to MEK under the basal level of GTP-Ras. Expression of Raf-B is highly restricted with highest levels in the cerebrum and testes and defects in *braf* are involved in a wide range of cancers. The BRAF gene mutation is frequently detected in papillary thyroid carcinoma, melanocytic nevi, primary cutaneous melanomas and colorectal cancers.

Synonyms:

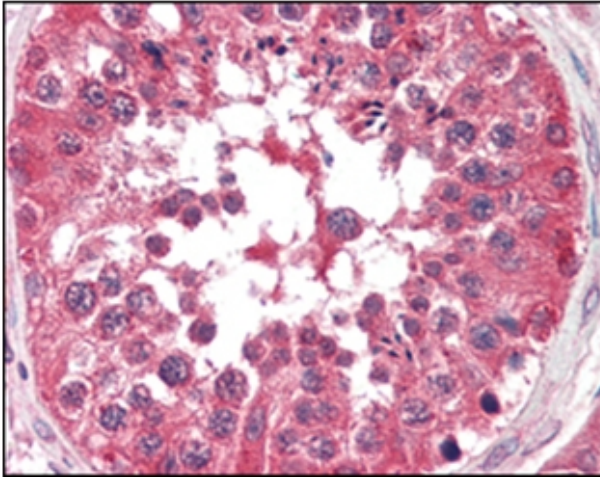
BRAF, BRAF1, RAFB1, p94

Product images:


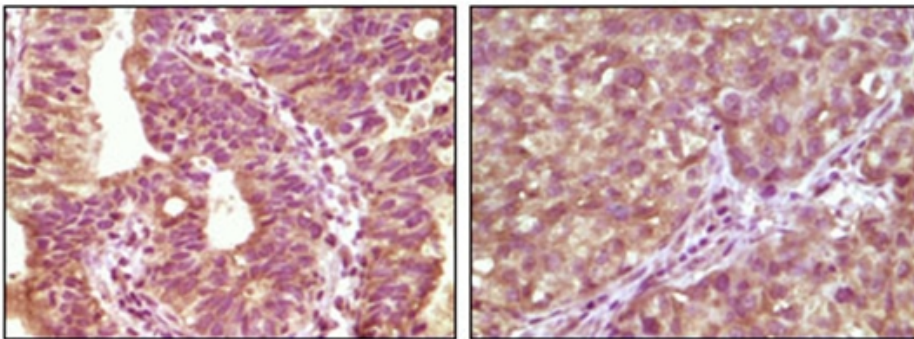
Western blot analysis using BRAF antibody Cat.-No AM06152SU-N against truncated recombinant Braf (Lane 1) and A431 cell lysate (Lane 2).



Western blot analysis using BRAF antibody Cat.-No AM06152SU-N against HEK293T cells transfected with the pCMV6-ENTRY control (Lane 1) and pCMV6-ENTRY Braf cDNA (Lane 2).



Immunohistochemical analysis of paraffin-embedded human testis tissues using BRAF antibody Cat.-No AM06152SU-N



Immunohistochemical analysis of paraffin-embedded human bladder carcinoma tissue (left) and lung carcinoma tissue (right) showing cytoplasmic localization using BRAF antibody Cat.-No AM06152SU-N with DAB staining.