

Product datasheet for **AM06136SU-N**

CIB1 Mouse Monoclonal Antibody [Clone ID: 5A1F5E12]

Product data:

Product Type:	Primary Antibodies
Clone Name:	5A1F5E12
Applications:	ELISA, IHC, WB
Recommended Dilution:	ELISA: 1/10000. Western Blot: 1/500 - 1/2000. Immunohistochemistry on Paraffin Sections: 1/200 - 1/1000.
Reactivity:	Human
Host:	Mouse
Isotype:	IgG
Clonality:	Monoclonal
Immunogen:	Purified recombinant fragment of CIB1 expressed in E. Coli.
Formulation:	State: Ascites State: Ascitic fluid Preservative: 0.03% Sodium Azide
Conjugation:	Unconjugated
Storage:	Store the antibody undiluted at 2-8°C for one month or (in aliquots) at -20°C for longer. Avoid repeated freezing and thawing.
Stability:	Shelf life: one year from despatch.
Gene Name:	calcium and integrin binding 1
Database Link:	Entrez Gene 10519 Human Q99828



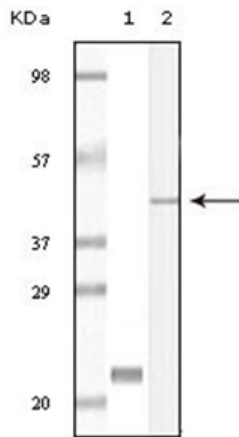
[View online »](#)

Background:

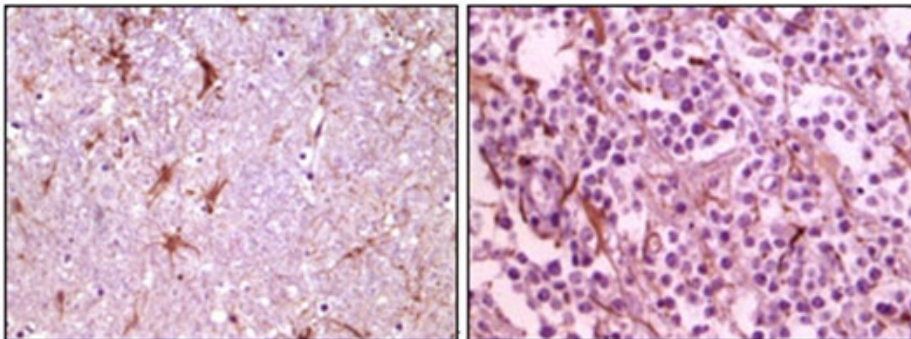
CIB1 (also designated calcium and integrin binding 1 or calmyrin), with 191-amino acid protein (about 21kDa), belongs to the calcium-binding protein family. CIB1 is known to interact with DNA-dependent protein kinase and may play a role in kinase-phosphatase regulation of DNA end joining. CIB1 is an EF-hand-containing protein that binds multiple effector proteins, including the platelet alpha(IIb)beta(3) integrin and several serine/threonine kinases and potentially modulates their function. CIB1 regulates platelet aggregation in hemostasis through a specific interaction with the alpha(IIb) cytoplasmic domain of platelet integrin alpha(IIb)beta(3). CIB1 is also ubiquitously expressed activating and inhibiting protein ligand of the InsP3R.

Synonyms:

Calmyrin, KIP, PRKDCIP, SIP2-28, CIBP

Product images:


Western blot analysis using CIB1 antibody Cat.-No AM06136SU-N against truncated CIB1 recombinant protein (Lane 1) and A431 cell lysate (Lane 2).



Immunohistochemical analysis of paraffin-embedded human thalamus (left) and glioma (right) tissue, showing membrane localization using CIB1 antibody Cat.-No AM06136SU-N with DAB staining.