

## Product datasheet for **AM03063PU-N**

### HLA class II DR beta 1 / HLA-DRB1 Mouse Monoclonal Antibody [Clone ID: MEM-267]

#### Product data:

Product Type:	Primary Antibodies
Clone Name:	MEM-267
Applications:	ELISA, FC, WB
Recommended Dilution:	<b>Western Blotting.</b> <b>Flow Cytometry:</b> The antibody MEM-267 stains immature dendritic cells that express empty cell surface MHC molecules, but not cells that express predominantly peptide loaded forms. <b>ELISA.</b>
Reactivity:	Human
Host:	Mouse
Isotype:	IgG2b
Clonality:	Monoclonal
Immunogen:	Purified, insoluble DR1 beta chain (DRB1*0101) expressed in E. coli inclusion bodies.
Specificity:	The antibody MEM-267 specifically binds to the empty but not peptide-loaded form of HLA-DR1. DR is the isotypes of human MHC Class II molecules expressed on antigen-presenting cells (APC; dendritic cells, B lymphocytes, monocytes, macrophages).
Formulation:	PBS, pH 7.4 State: Aff - Purified State: Liquid purified IgG fraction (> 95% pure by SDS-PAGE) Preservative: 15 mM Sodium Azide
Concentration:	lot specific
Purification:	Affinity Chromatography on Protein A
Conjugation:	Unconjugated
Storage:	Store undiluted at 2-8°C for one month or (in aliquots) at -20°C for longer. Avoid repeated freezing and thawing.
Stability:	Shelf life: one year from despatch.
Database Link:	<a href="#">P04229</a>



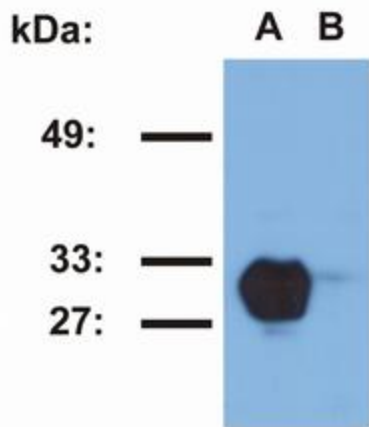
[View online »](#)

**Background:**

HLA-DR1 belongs to the HLA class II beta chain paralogues. The MHC Class II molecule is a heterodimer consisting of an alpha (DRA) and a beta chain (DRB), both anchored in the membrane. It plays a central role in the immune system by presenting peptides derived from extracellular proteins. MHC Class II molecules are expressed in antigen presenting cells (APC). The beta chain is approximately 26-28 kDa. Within the DR molecule the beta chain contains all the polymorphisms specifying the peptide binding specificities. Hundreds of DRB1 alleles have been described and typing for these polymorphisms is routinely done for bone marrow and kidney transplantation.

**Synonyms:**

MHC class II antigen DRB1, DR1, DR-1

**Product images:**

Western blotting analysis of HLA-DR1 in Raji (A) and Jurkat (B) cell lines using MEM-267 antibody.