

Product datasheet for **AM01167PU-N**

Ki67 (MKI67) Mouse Monoclonal Antibody [Clone ID: Ki-67]

Product data:

Product Type:	Primary Antibodies
Clone Name:	Ki-67
Applications:	FC, IF, WB
Recommended Dilution:	Flow cytometry: Recommended dilution: 1-5 µg/ml. Intracellular staining. Immunocytochemistry: Paraformaldehyde fixation; recommended antibody concentration 1 µg/ml.
Reactivity:	Bovine, Human
Host:	Mouse
Isotype:	IgG1
Clonality:	Monoclonal
Immunogen:	Nuclei of the Hodgkin lymphoma cell line L428
Specificity:	This antibody recognizes Ki-67 antigen, a non-histone nuclear protein expressed exclusively in proliferating cells.
Formulation:	Phosphate buffered saline (PBS) with 15 mM sodium azide, approx. pH 7.4 State: Purified State: Liquid Ig fraction
Concentration:	lot specific
Purification:	Protein-A affinity chromatography (> 95% pure by SDS-PAGE)
Conjugation:	Unconjugated
Storage:	Store undiluted at 2-8°C. DO NOT FREEZE!
Stability:	Shelf life: one year from despatch.
Gene Name:	marker of proliferation Ki-67
Database Link:	Entrez Gene 4288 Human P46013



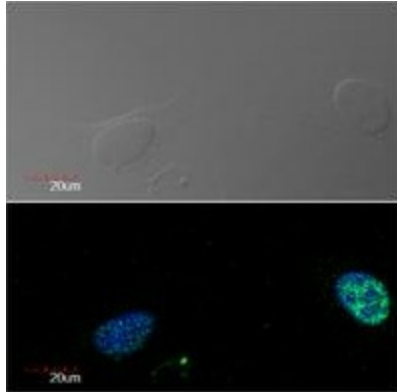
[View online »](#)

Background:

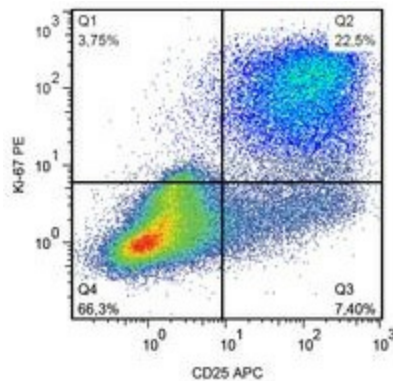
Ki-67 is a highly protease-sensitive nuclear protein expressed in two isoforms (345 kDa and 395 kDa), both of which are identified by the antibody clone Ki-67. The Ki-67 antigen is essential for cell proliferation and its expression is restricted to the cycling cells. It is detected in G1, S, G2 and M phase, whereas it is absent in cells which are in G0 phase and it is not associated with DNA repair processes. Ki-67 thus represents an important tool for detection of proliferating cells, which is of great importance in tumor diagnostics and is commonly used as a prognostic factor in cancer studies.

Synonyms:

Ki67 antigen, MKI67, Proliferation marker

Product images:

Immunocytochemistry detection of Ki-67 in U2OS cell line (human osteosarcoma) using monoclonal antibody Ki-67 (green). Cell nuclei stained with DAPI (blue).



Flow cytometry analysis of human peripheral blood mononuclear cells stimulated with PHA. Surface staining of CD25 (clone MEM-181 APC) was followed by permeabilization and nuclear staining of Ki-67 (clone Ki-67 PE).