

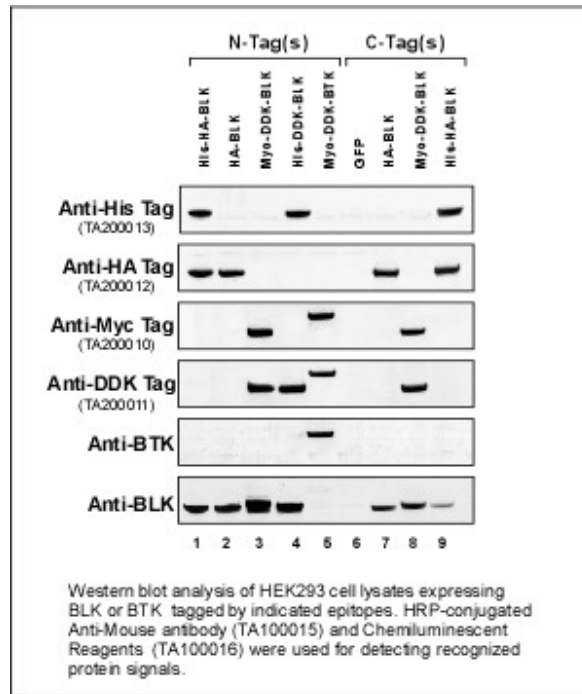
## Peroxidase Conjugated Affinity Purified Goat anti-Mouse IgG [H&L]

<b>Catalog Number</b>	<b>TA100015</b>
<b>Product Name</b>	Peroxidase Conjugated Affinity Purified Goat anti-Mouse IgG [H&L]
<b>Immunogen</b>	Mouse IgG, whole molecule
<b>Specificity</b>	Minimum Cross reactivity to Bovine, Chicken, Goat, Guinea Pig, Hamster, Horse, Human, Rabbit, Rat and Sheep Serum Proteins
<b>Quantity</b>	250 ug
<b>Purity</b>	This product was prepared from monospecific antiserum by immunoaffinity chromatography using Mouse IgG coupled to agarose beads followed by solid phase adsorption(s) to remove any unwanted reactivities. Assay by immunoelectrophoresis resulted in a single precipitin arc against anti-Peroxidase, anti-Goat Serum, Mouse IgG and Mouse Serum. No reaction was observed against Bovine, Chicken, Goat, Guinea Pig, Hamster, Horse, Human, Rabbit, Rat and Sheep Serum Proteins.
<b>Formulation</b>	1mg/ml in PBS (pH 7.2) with 10 mg/ml Bovine Serum Albumin (BSA). IgG and Protease free. Contains 0.01% (w/v) Gentamicin Sulfate as preservative.
<b>Storage/Stability</b>	This product is stable for several weeks at 4° C as an undiluted liquid. For extended storage aliquot contents and freeze at -20° C or below. Avoid cycles of freezing and thawing. Centrifuge product if not completely clear after standing at room temperature. Dilute only prior to immediate use. Expiration date is one (1) year from date of restoration.
<b>Application</b>	Suitable for immunoblotting (western or dot blot), ELISA, immunoperoxidase electron microscopy and immunohistochemistry as well as other peroxidase-antibody based enzymatic assays requiring lot-to-lot consistency.
<b>Working Concentration</b>	This product has been assayed against 1.0 µg of Mouse IgG in a standard capture ELISA using ABTS (2,2'-azino-bis-[3-ethylbenthiiazoline-6-sulfonic acid]) code # ABTS-100 as a substrate for 30 minutes at room temperature. A working dilution of 1:12,000 to 1:60,000 is suggested for this product. Optimal titers for other applications should be determined by the researcher. Optimal working dilutions should be determined experimentally by the investigator. Prepare working dilution immediately before use.

Suggested starting dilutions are as follows:

Western blot: 1:1000. Immunoprecipitation and immunostaining: 1:200.

**Experimental Data**



**Notes**

This product is distributed for laboratory research use only, and is not intended for diagnostic use.